

1.0 Reference and Address			
Report Number	180202091GZU-001	Original Issued: 7-May-2018	Revised: None
Standard(s)	UL 1431 Issued: 2011/03/23 Ed:3 Rev:2012/10/10 Personal Hygiene and Health Care Appliances Safety Of Household And Similar Appliances - Part 1: General Requirements [CSA C22.2#60335-1:2016 Ed.2] CSA C22.2#60335-2-52 Issued: 2014/02/01 Household and Similar Electrical Appliances - Safety - Part 2-52: Particular Requirements for Oral Hygiene Appliances		
Applicant	Iconbeauty (Shenzhen) Holding Ltd	Manufacturer	Iconbeauty (Shenzhen) Holding Ltd
Address	3A, Huamei Mansion, Huamei Road, Baoan District, Shenzhen	Address	3A, Huamei Mansion, Huamei Road, Baoan District, Shenzhen
Country	China	Country	China
Contact	Mr. Liuyunhao	Contact	Mr. Liuyunhao
Phone	86-755-2328 9599	Phone	86-755-2328 9599
FAX	86-755-2739 6005	FAX	86-755-2739 6005
Email	eric_lau@iconbeauty-care.com	Email	eric_lau@iconbeauty-care.com

2.0 Product Description	
Product	Electric Toothbrush
Brand name	Most, Iconbeauty.
Description	The product covered by this report is an Electric Toothbrush, rated 120Vac, 60Hz, for household and indoors use only, provided with a non-detachable power supply cord terminated in a 2-wire plug.
Models	BH-119, BH-121, BH-126, EH-119, EH-121, EH-126.
Model Similarity	<p>Models BH-119, BH-121, BH-126 with brand name "Iconbeauty", models EH-119, EH-121, EH-126 with brand name "Most".</p> <p>Model BH-119 is identical with BH-121, except BH-119 has two buttons, and BH-121 has one button.</p> <p>Model BH-126 is identical with BH119, except BH-119 use LED lamp to indicate different functions, totally 3 level, and BH-126 use LED display method with different numbers to indicate different levels, totally 10 level.</p> <p>Model BH-119 is identical to EH-119, except the model name. Model BH-121 is identical to EH-121, except the model name. Model BH-126 is identical to EH-126, except the model name.</p> <p>The effect of max level of all models is the same.</p>
Ratings	100-240V~, 50/60Hz, 1.0W.
Other Ratings	NA

3.0 Product Photographs

Photo 1 - External view of model BH-121



Photo 2 - External view of model BH-121



3.0 Product Photographs

Photo 3 - External view of model BH-121



Photo 4 - External view of Charger for all models



3.0 Product Photographs

Photo 5 - External view of Charger for all models

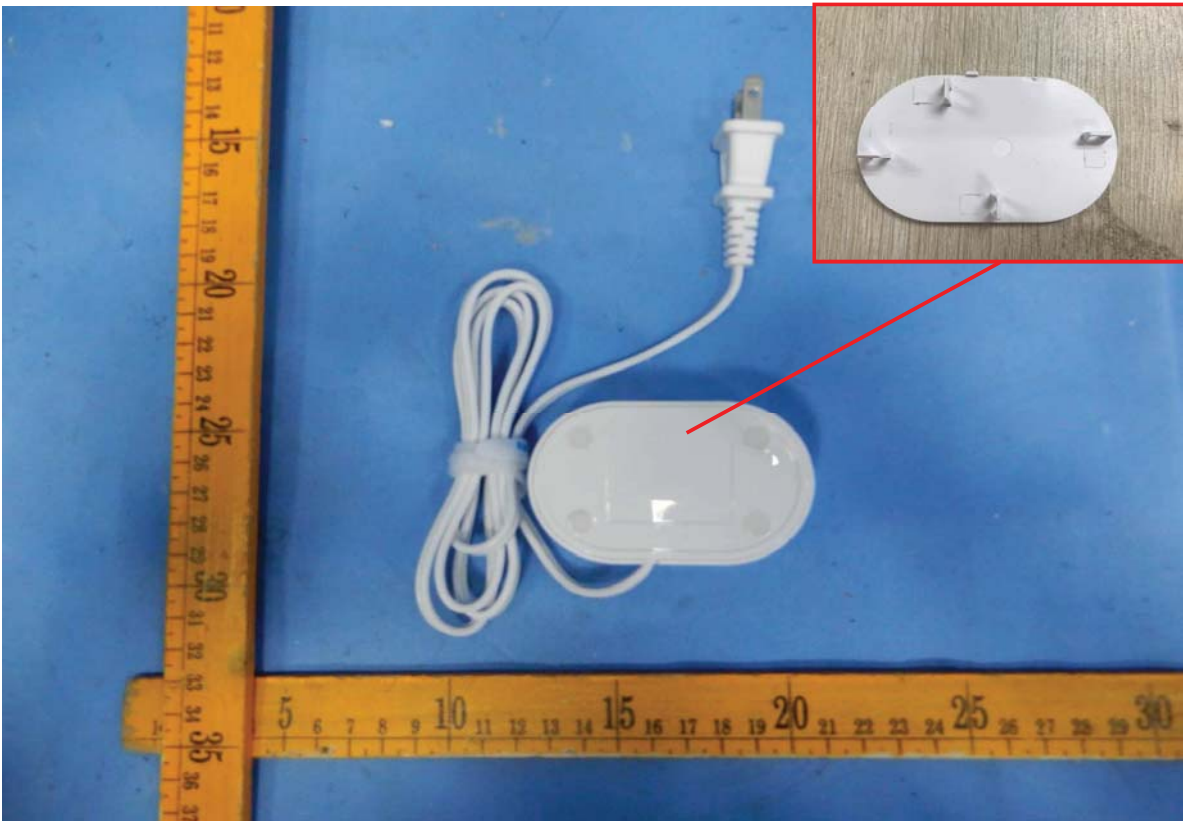
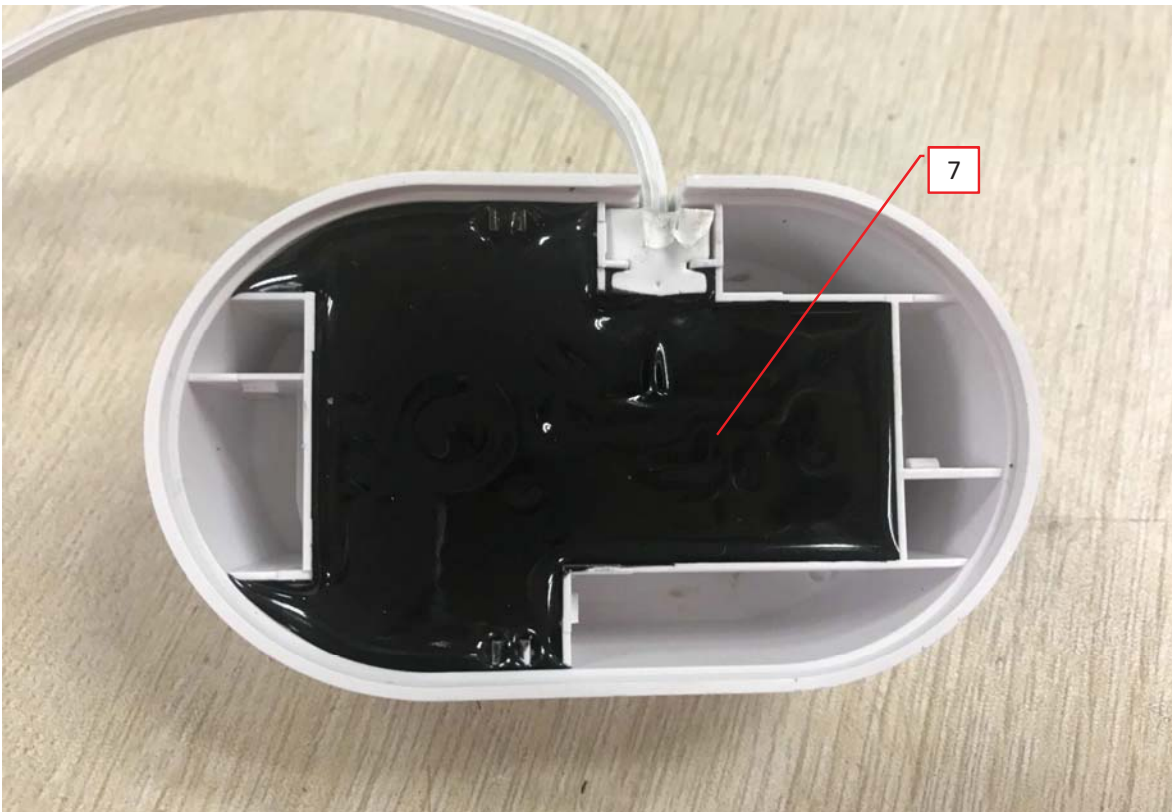
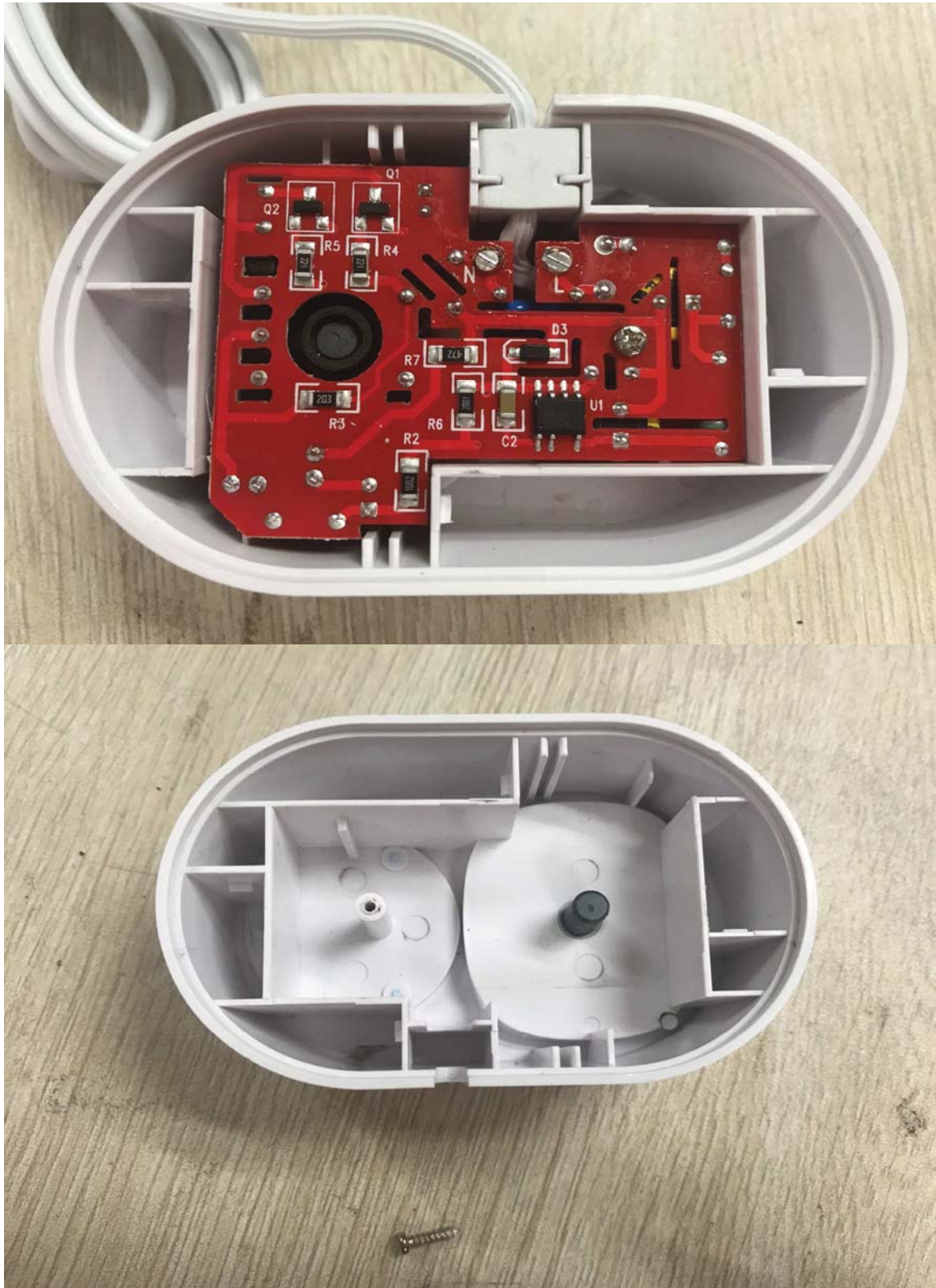


Photo 6 - Internal view of Charger for all models



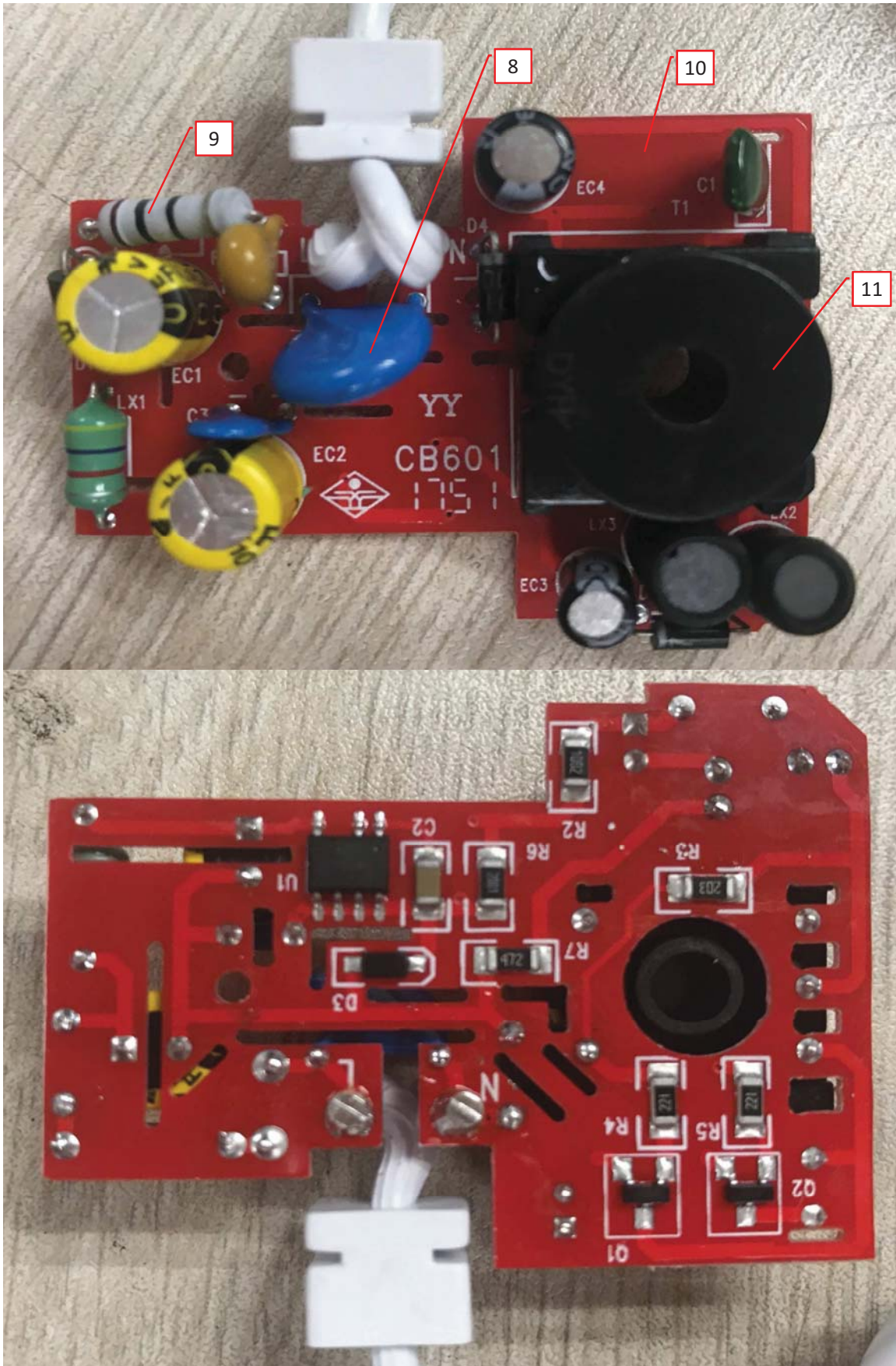
3.0 Product Photographs

Photo 7 - Internal view of Charger for all models



3.0 Product Photographs

Photo 8 - Internal view of Charger PCB for all models



3.0 Product Photographs

Photo 9 - Internal view of model BH-121

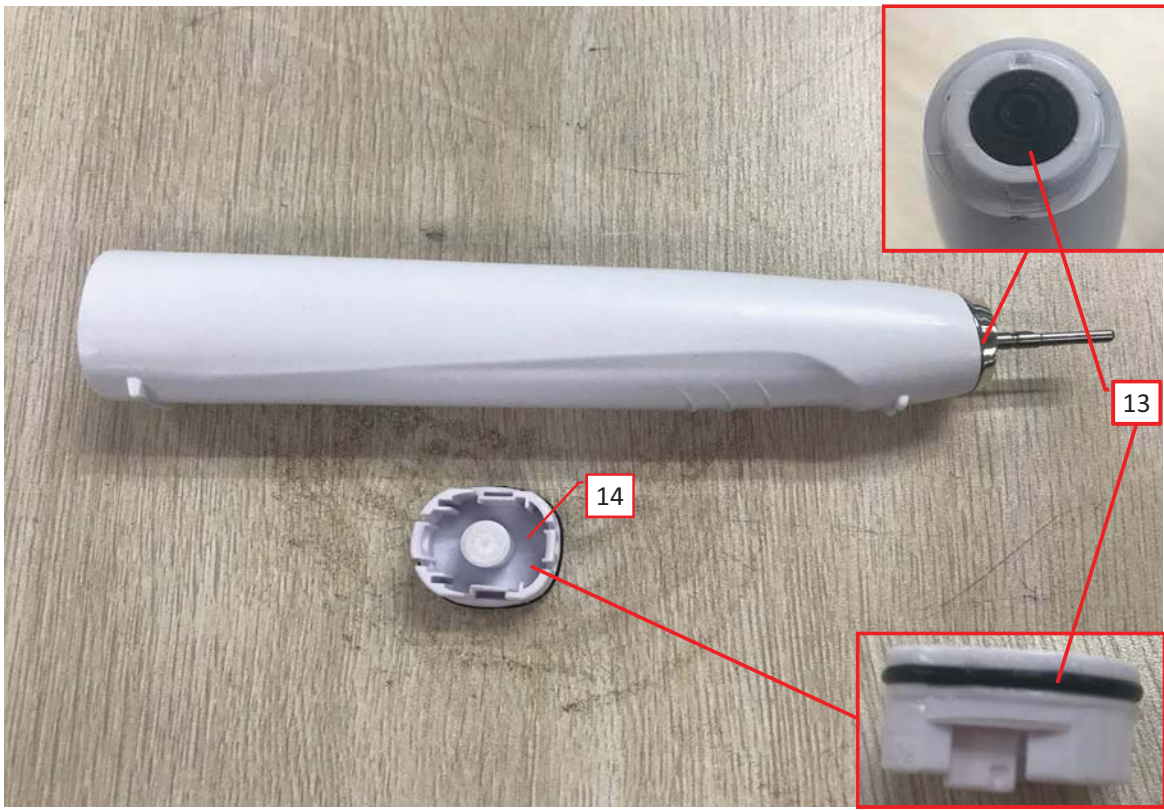
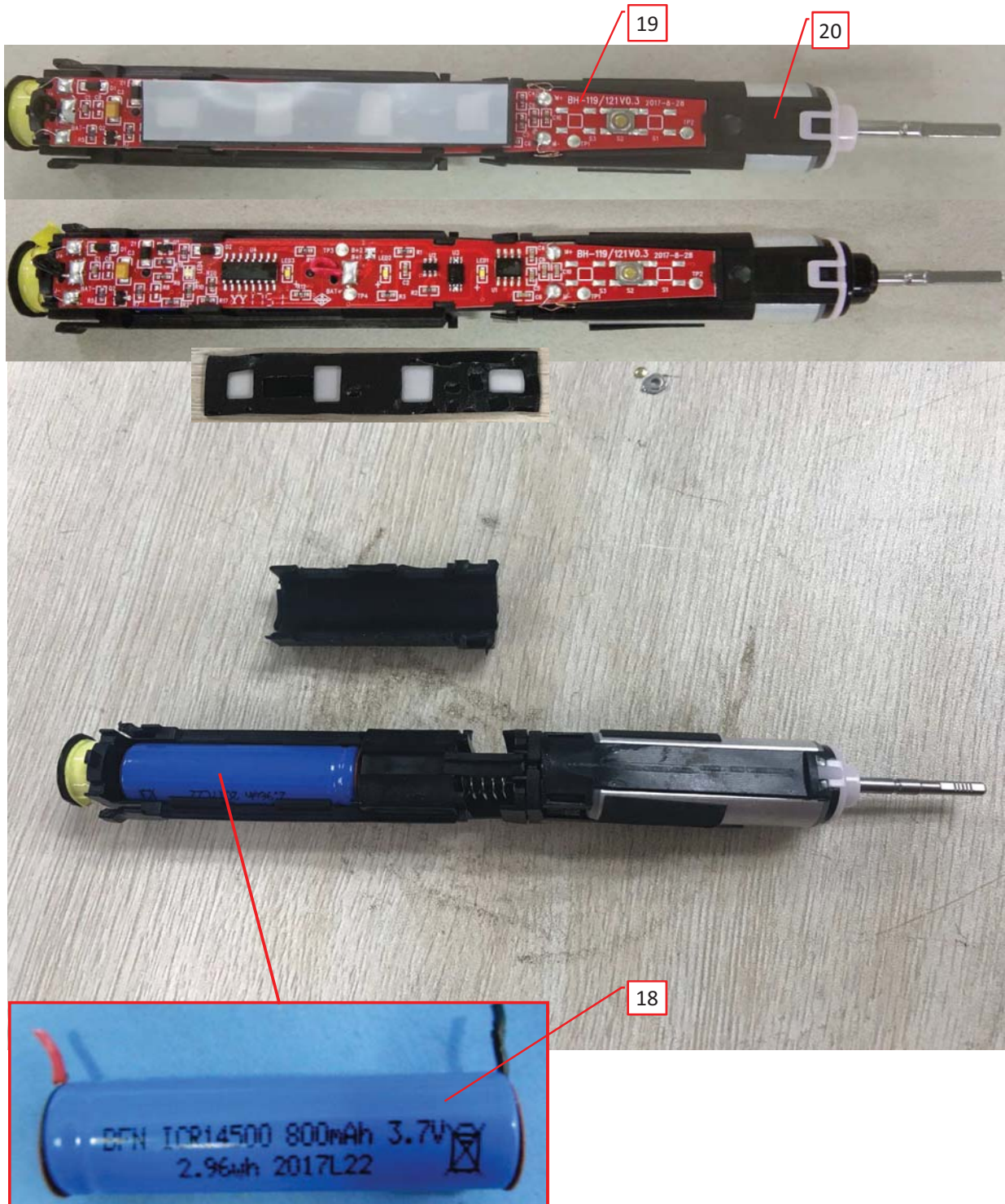


Photo 10 - Internal view of model BH-121



3.0 Product Photographs

Photo 11 - Internal view of model BH-121

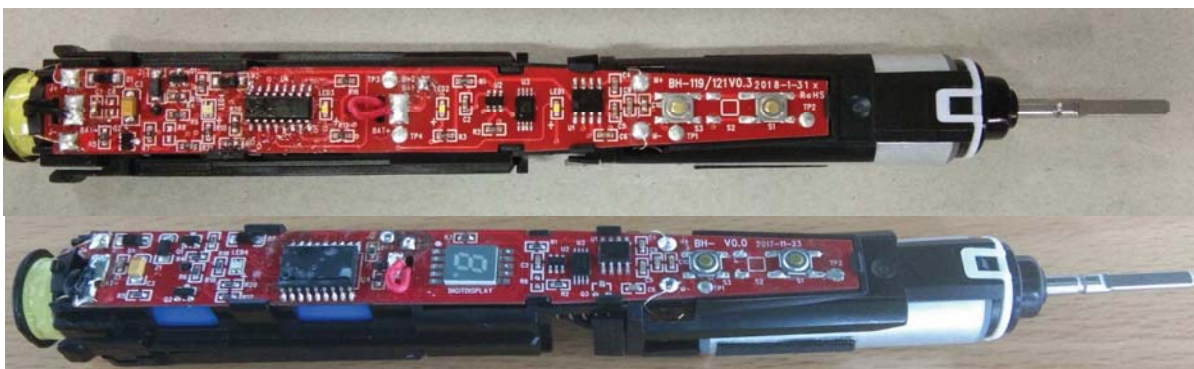


3.0 Product Photographs

Photo 12 - External View of model BH-119 and BH-126 in order from left to right

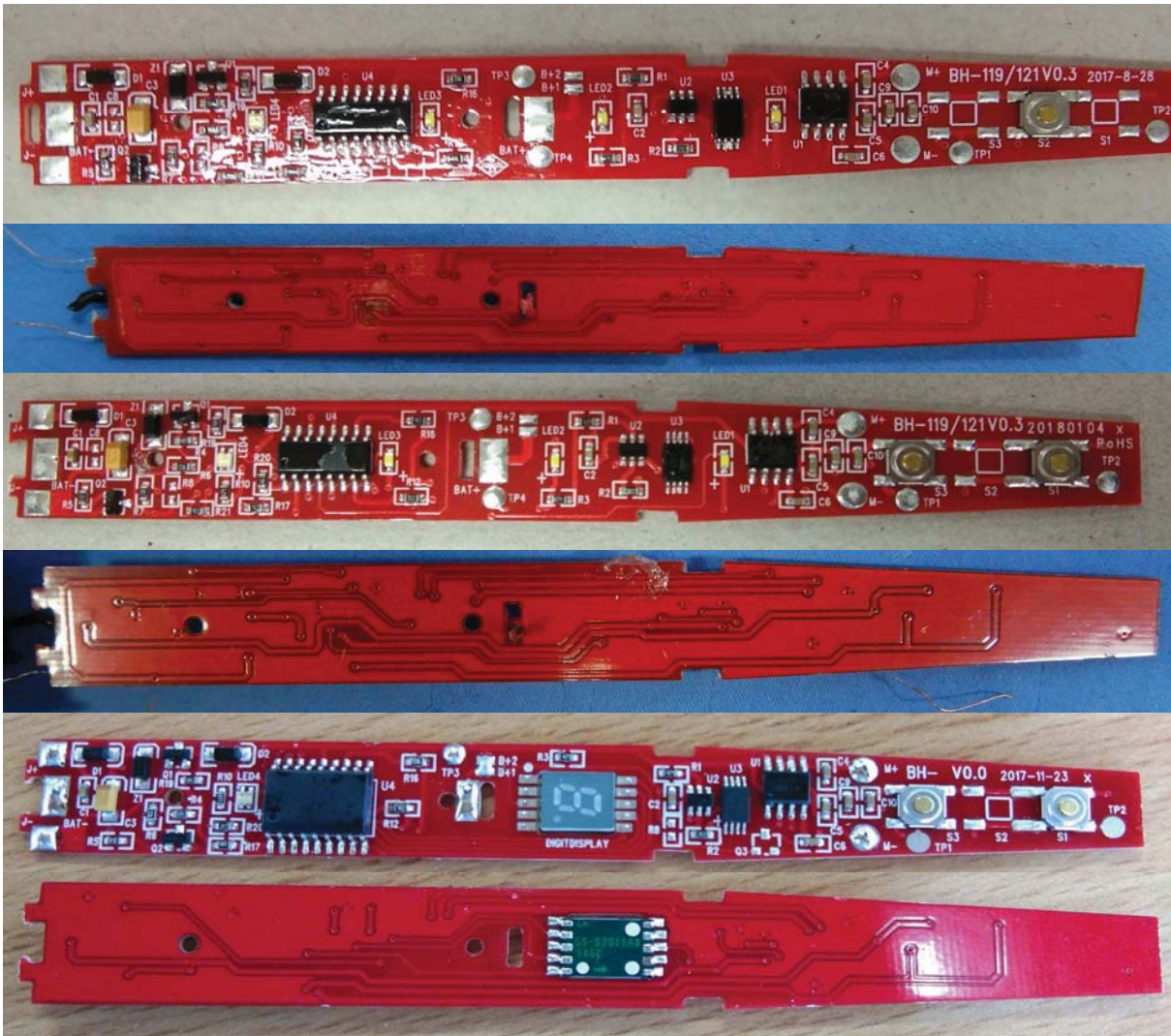


Photo 13 - Internal view of model BH-119 and BH-126



3.0 Product Photographs

Photo 14 - View of Control PCB of models BH-121, BH-119, BH-126 in order from up to down



4.0 Critical Components						
Photo #	Item no. ¹	Name	Manufacturer/ trademark ²	Type / model ²	Technical data and securement means	Mark(s) of conformity ³
1	1	Power Cord Set	Various	SPT-1	Rated VW-1, 105°C, 300V, 18AWG x 2C. Attached to a polarized 1-15P plug. Cord length within 1.22 -2.44m from the exit cord entry to plug surface. Complied with UL817.	cULus
1	2	Handle Enclosure	LG CHEM LTD	TR5571	ABS/MMA. Rated HB, HWI=4, HAI=0, CTI=0, 50°C. Min. 1.5 mm thick.	cURus
1	3	Button	Various	Various	TPE. Hardness: 55. Measured min. 1.0mm thick.	NR
1	4	Toothbrush Enclosure	EXXONMOBIL CHEMICAL CO	PP1352E1(h)(i)	PP. Rated HB, 125°C. Measured min. 1.5 mm thick.	cURus
4	5	Charger Base	CHI MEI CORPORATION	PA-765A(+)	ABS. Rated V-0, HWI=3, HAI=0, CTI=1, 80°C. Min. 2.1 mm thick. Including a housing and a bottom cover, secured to each other by buckle.	cURus
5	6	Marking Label (not shown)	Various	Various	For ABS/MMA material surface, 60°C. Complied with UL969. Or may be molded, laser printed, silk screened on outer surface of charger base and Body bottom cover.	UR
6	7	Epoxy Resin	HUIZHOU QIFU NEW MATERIALS TECHNOLOGY CO LTD	300A/300B	Epoxy Potting Compound. Rated V-0, HWI=0, HAI=0, CTI=0, 130°C. Filled in the Charger Base and enclosed all live parts.	UR
8	8	Varistor	CERGLASS MFG INC	10D431K	Rated 430Vdc.	cURus
8	9	Fusing Resistor	Various	Various	Metal Oxide Film Resitance. Rated 10 Ω, 1 W, soldered on Charger PCB. (R1)	NR
8	10	Charger PCB	Various	Various	Rated V-0, 130 °C. Complied with UL796. Measured 1.0 mm thick.	cURus
8	11	Emitting Coil	Various	Various	It consisted of the following parts 11a thru 11c.	NR
8	11a	Winding (not shown)	Various	Various	Enameled copper wire, varnish impregnated. 2UEW. Rated 130 °C, Ø0.10mm x 8p X 100 Ts.	UR
8	11b	Bobbin (not shown)	CHANG CHUN PLASTICS CO LTD	T375J	PMC. Rated V-0, HWI=1, HAI=0, CTI=3, 150°C. Min. 0.75 mm thick.	cURus
8	11c	Magnet Core (not shown)	Various	Various	Ferrit. Measured Ø2.5mm × 14.4mm.	NR
8	12	Thermistor	SHENZHEN JDIT FUSE INDUSTRIAL CO LTD	TMC-8750Aseries	V _{max} = 30 V, I _{max} = 40 A, T _{moa} = 80 °C.	cURus

4.0 Critical Components						
Photo #	Item no. ¹	Name	Manufacturer/ trademark ²	Type / model ²	Technical data and securement means	Mark(s) of conformity ³
9	13	Seal Ring	JIANGSU HONGDA NEW MATERIAL CO LTD	HD-8750	SIR. Rated V-0, 150°C. Min. 3.0mm thick.	cURus
9	14	Battery Holder	CHI MEI CORPORATION	PA-757(+)	ABS. Rated HB, HWI=4, HAI=0, CTI=0, 85°C. Min. 1.5 mm thick.	cURus
10	15	Motor Fixed Ring	LG CHEM LTD	TR557I	ABS/MMA. Rated HB, HWI=4, HAI=0, CTI=0, 50°C. Min. 1.5 mm thick.	cURus
10	16	Receiving Coil	Various	Various	It consisted of the following parts 16a and 16b.	NR
10	16a	Winding (not shown)	Various	Various	Enameled copper wire, varnish impregnated. Rated 130°C, Ø 0.10mm x 1p x 88 Ts.	UR
10	16b	Bobbin (not shown)	CHANG CHUN PLASTICS CO LTD	T375J	PMC. Rated V-0, HWI=1, HAI=0, CTI=3, 150°C. Min. 0.75 mm thick.	cURus
10	17	Motor	XIN YUE SURPER CLEAN SCIENCE AND TECHNOLOGY LTD.	XY158N_25118_58	Rated 3.7Vdc. Secured on Inner Bracket by position poses and snap method.	NR
11	18	Battery	SHENZHEN BOFUNENG BATTERY CO LTD	ICR14500 800	Lithium ion (Cylindrical). Rated 3.7V, 800mAh.	UR
11	19	Control PCB	Various	Various	Rated V-0, 130 °C. Complied with UL796. Measured 1.0 mm thick.	cURus
11	20	Inner Bracket	POLYPLASTICS CO LTD	M90-44(r5)	POM. Rated HB, 95°C. Min. 0.75 mm thick.	cURus

NOTES:

1) Not all item numbers are indicated (called out) in the photos, as their location is obvious.

2) "Various" means any type, from any manufacturer that complies with the "Technical data and securement means" and meets the "Mark(s) of conformity" can be used.

3) Indicates specific marks to be verified, which assures the agreed level of surveillance for the component. "NR" - indicates Unlisted and only visual examination is necessary. "See 5.0" indicates Unlisted components or assemblies to be evaluated periodically refer to section 5.0 for details.

5.0 Critical Unlisted CEC Components

No Unlisted CEC components are used in this report

6.0 Critical Features

Recognized Component - A component part, which has been previously evaluated by an accredited certification

body with restrictions and must be evaluated as part of the basic product considering the restrictions as specified by the Conditions of Acceptability.

Listed Component - A component part, which has been previously Listed or Certified by an accredited Certification Organization with no restrictions and is used in the intended application within its ratings.

Unlisted Component - A part that has not been previously evaluated to the appropriate designated component standard. It may also be a Listed or Recognized component that is being used outside of its evaluated Listing or component recognition.

Critical Features/Components - An essential part, material, subassembly, system, software, or accessory of a product that has a direct bearing on the product's conformance to applicable requirements of the product standard.

Construction Details - For specific construction details, reference should be made to the photographs and descriptions. All dimensions are approximate unless specified as exact or within a tolerance. In addition to the specific construction details described in this Report, the following general requirements also apply.

1. Spacing - In primary circuits the following spacing are maintained through air and over surfaces of insulating material between current-carrying parts of opposite polarity and between bare live part and other non-current-carrying conductive parts.

	Clearance	Creepage distances
Basic insulation	1.5 mm	0.56 mm
Supplementary insulation	1.5 mm	0.56 mm
Functional insulation	1.5 mm	0.42 mm
Reinforced insulation	3.0 mm	2.4 mm

2. Mechanical Assembly - Components such as switches, fuseholders, connectors, wiring terminals and display lamps are mounted and prevented from shifting or rotating by the use of lockwashers, starwashers, or other mounting format that prevents turning of the component.

3. Corrosion Protection - All ferrous metal parts are protected against corrosion by painting, plating or the equivalent.

4. Accessibility of Live Parts - All uninsulated live parts in primary circuitry are housed within a non-metallic enclosure constructed with no openings other than those specifically described in Sections 4 and 5.

5. Grounding - This product is not provided with a means of grounding as the standard not request.

6. Polarized Connection - This product is provided with a polarized power supply connection. All single pole switches and fuses are connected only to the ungrounded supply circuit conductor.

7. Internal Wiring - Internal wiring is routed away from sharp or moving parts. Internal wiring leads terminating in soldered connections are made mechanically secure prior to soldering. Recognized Component separable (quick disconnect) connectors of the positive detent type, closed loop connectors, or other types specifically described in the text of this report are also acceptable as internal wiring terminals. At points where internal wiring passes through metal walls or partitions, the wiring insulation is protected against abrasion or damage by plastic bushings or grommets.

8. Schematics - Refer to Illustration 2, 2a thru 2c for schematics requiring verification during Field Representative Inspection Audits.

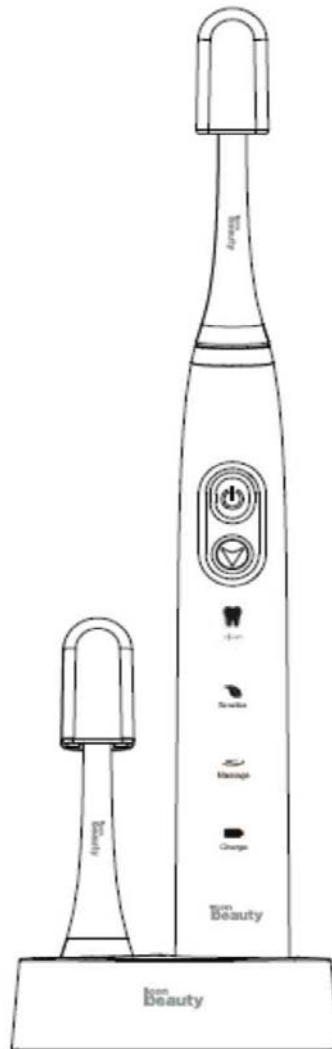
9. Markings - The product is marked on a labeling system as described in item no. 6 of Section 4.0 as follows:
 - trade name, trade mark or manufacturer name
 - model number
 - date of manufacture (denoted by MMDDYY)
 - electrical rating

6.0 Critical Features

10. Installation, Operating and Safety Instructions - Instructions for installation and use of this product are provided by the manufacturer as required by the standard.
- Upper case and lower case letters shall not be less than 2.0 mm and 1.6 mm in height respectively.
 - The phrases "IMPORTANT SAFEGUARDS" and "SAVE THESE INSTRUCTIONS" shall be in letters not less than 4.8 mm in height.
 - The phrases "READ ALL INSTRUCTIONS BEFORE USING" and "DANGER" shall be in letters at least 2.0 mm high, but less than 4.8 mm high.
 - Refer to Illustration No. 1, 1a-1I for details.
11. ETL Markings - The product is marked as follows:
- standard
 - control number (5011423)
 - ETL certification marking

7.0 Illustrations

Illustration 1 - Instruction Manual for model BH-119



BH-119

Sonic Electric Toothbrush

7.0 Illustrations

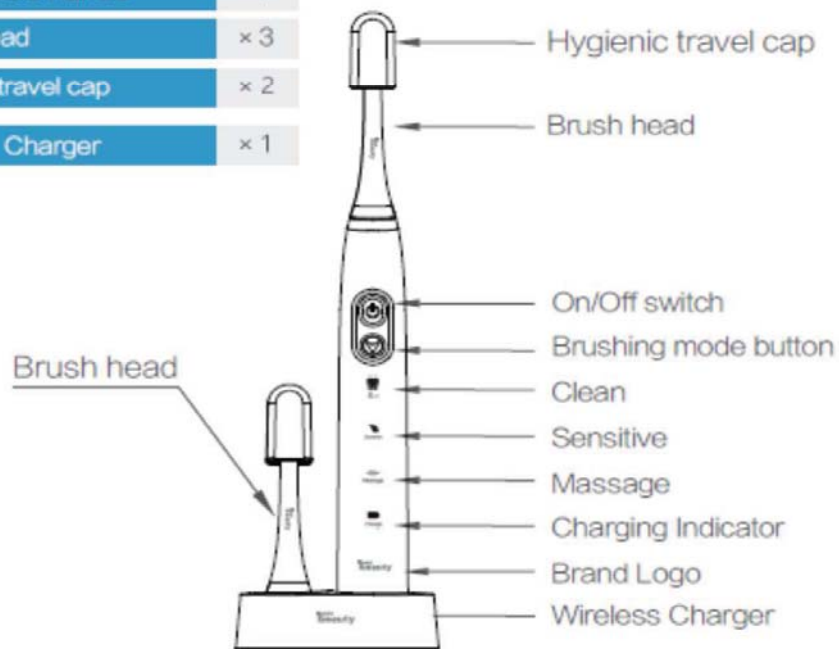
Illustration 1a - Instruction Manual for model BH-119

Product specifications

Product Name	Sonic electric toothbrush
Product Model Number	BH-119
Product Edition	A0
Rated Voltage	100-240V ~, 50/60Hz
Rated Output Power	1.0W
On/Off Mode	Soft touch
Display	LED
Display Function	Clean/Sensitive/Massage/Charge
Vibrating Frequency	31000 Strokes /min
Charging	Wireless Charger
Charging Time	10-16H
Charging Current	65±15mA
Battery	Li-ion 800mAh/3.7V
Battery Indicator	Lower Battery with red light indicator
Waterproof	IPX7

Package Contents

Rechargeable Handle	× 1
Brush Head	× 3
Hygienic travel cap	× 2
Wireless Charger	× 1



7.0 Illustrations

Illustration 1b - Instruction Manual for models BH-119, BH-121, BH-126

IMPORTANT SAFEGUARDS

READ ALL INSTRUCTIONS BEFORE USING

DANGER—To reduce the risk of electrocution:

1. Always unplug this product immediately after using.
2. Do not use while bathing.
3. Do not place or store product where it can fall or be pulled into a tub or sink.
4. Do not place in or drop into water or other liquid.
5. Do not reach for a product that has fallen into water. Unplug immediately.
6. Do not share the brush head with other people.
7. Do not place the power cord tightly around the adapter.
8. Do not place metal objects on the charger, such as coins or clips.
9. Please unplug the charger when you are not using it for a longer time, so that to avoid a danger or fire.

Kind Notice:

User could possibly experience mild bleeding of the gums during the first days of electric toothbrush usage. If the bleeding continues over 2 weeks, please stop using this product and consult a dentist.

WARNING

To reduce the risk of burns, electrocution, fire, or injury to persons.

1. A product should never be left unattended when plugged in.
2. Close supervision is necessary when this product is used by, on, or near children or invalids.
3. Use this product only for its intended use as described in this manual. Do not use attachments not recommended by the manufacturer.
4. Never operate this product if it has a damaged cord or plug, if it is not working properly, if it has been dropped or damaged, or dropped into water. Return the product to a service center for examination and repair.
5. Keep the cord away from heated surfaces.
6. Never block the air openings of the product or place it on a soft surface, such as a bed or couch, where the air openings may be blocked. Keep the air openings free of lint, hair, and the like.
7. Never use while sleeping or drowsy.
8. Never drop or insert any object into any opening or hose.

7.0 Illustrations

Illustration 1c - Instruction Manual for models BH-119, BH-121, BH-126

9. Do not use outdoors or operate where aerosol (spray) products are being used or where oxygen is being administered.
10. Unplug this product before filling.Fill (reservoir) with water only unless otherwise specified by manufacturer. Do not overfill(or specify filling instructions).
11. Before connecting the power cord, check the local power supply is in compliance with the voltage indicated by the product.
12. The product (including toothbrush head, toothbrush handle) if there are damaged handle, please stop using immediately.
13. If you have had dental surgery in the last 2 months, consult a dentist before using the toothbrush.
14. If you are bleeding after using a toothbrush, or the bleeding condition lasts more than 1 week, Please consult your dentist.
15. Do not use a non-manufacturer's recommended toothbrush head.
16. If you have a heart rhythm regulator on your body or has been installed another device. Please consult your doctor.
17. This product is only suitable for cleaning teeth gums and tongue, do not use for other purposes. If you feel any discomfort or pain, please stop using and seek medical advice. Please consult your physician when using this toothbrush.
18. This product is not suitable for infants and will not be used by the operator, unless it can be supervised by the guardian and used under the guidance.
- 19.If the toothpaste contains hydrogen peroxide, baking soda or icarbonate (common whitening toothpaste), please brush your teeth after brushing with soap and water.

SAVE THESE INSTRUCTIONS



Iconbeauty (Shenzhen)Holding Ltd.
Zone 01,3A/F,Huamei Mansion, Huamei Road,Songgang,Baoan
District,Shenzhen,PRC
Tel : +86 755 2328 9599
www.iconbeauty-care.com

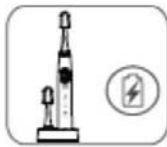
7.0 Illustrations

Illustration 1d - Instruction Manual for models BH-119, BH-121, BH-126

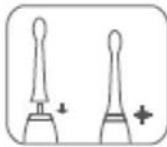
Warranty

- The Warranty period starts with the purchase date. Please keep the original purchase receipt in a safe place for future use. This document is required to verify the purchase.
- If the defect is covered by our warranty, the repaired or a new product will be returned to you. No new warranty period starts with a repair or replacement of the product.
- Excluded from the warranty are wear parts subject to normal wear and damages to fragile parts, e.g. switches, batteries, lamps or other parts manufactured from glass.
- This warranty expires if the product is damaged, not used as intended or out of service range.

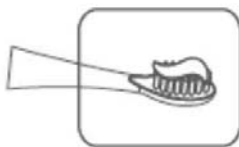
Brushing Teeth



For the first time, user needs to fill up the battery to be fully charged within 16 hours (indicated with green light)



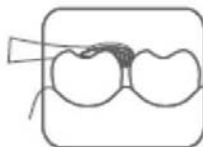
Put the brush head on the handle properly.



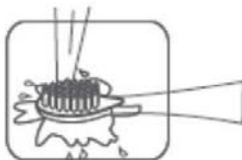
Moisten the bristles, squeeze some toothpaste on and switch on the toothbrush only when the brush head is already in your mouth.



It's better to move the brush head by 45 degrees upon your gum line.



Exert only light pressure when brushing to prevent damage to the gums and to increase the service life of the bristles.



Rinse the toothbrush and wipe it dry.

7.0 Illustrations

Illustration 1e - Instruction Manual for models BH-119, BH-121, BH-126

Troubleshooting

Problem	Reason	Solution
Weak Vibrations	1. Too much pressure upon teeth 2. Tight brush head connection	1. Adjust to light pressure 2. Reput it on properly
Shorter working time with charged battery	1. Charging Failure 2. Battery Lower	1. Charging correctly 2. Charging fully
The toothbrush does not work	Battery out of power	Recharge the battery

Charging Battery

1. Fully charge the battery before using it for the first time.
2. If the toothbrush is out of use over 6 months, please charge the battery over 15 hours to get a 25-day working time at least.
3. Recharge the battery better when it is used up. Otherwise, the half charging will hurt the battery's working life.
4. Make sure to charge the toothbrush correctly (with lighting indicator)
5. When the battery is fully charged, it will be indicated with green light.
6. It's a normal condition that, if the battery has been out of use for a longer time, the indicator may be enabled just after 10-60min charging period.
7. We recommend the user to release or use up the battery once a year. So that to improve the battery's working life.

7.0 Illustrations

Illustration 1f - Instruction Manual for models BH-119, BH-121, BH-126

Notice

“This appliance has a polarized plug (one blade is wider than the other).As a safety feature,this plug will fit in a polarized outlet only one way. If the plug does not fit fully in the outlet, reverse the plug .If it still does not fit, contact a qualified electrician.Do not attempt to defeat this safety feature.”

Maintenance

Cleaning brush head

- After use, please rinse the toothbrush and wipe it dry.
- Exert light pressure when brushing to prevent damage to the gums and to increase the service life of the bristles.

Cleaning toothbrush handle

- Rinse the toothbrush handle by water, and wipe it dry.
- Do not use the water over 40 degrees or acid cleaner.

Cleaning the Charger

- Please wipe the charger with a dry cloth to avoid short circuit.

Brush head replacement

- You are recommended to replace the brush head every 3 months.

Brushing Time

- The recommended brushing time is at least 2 minutes.
- It is divided up into 30-second intervals for 4 areas of the mouth.

7.0 Illustrations

Illustration 1g - Instruction Manual for models BH-119 and BH-121

Smart Timer

- This product can automatically record and rework your brushing modes and brushing time.
- It is equipped with a 2-min smarter timer to recommend user to brush with a smarter time.

Brushing Mode

This product supports 3 working modes: Clean/Sensitive/Massage. It will help you to remove more plaque, improve the health of your teeth and gums.

- Clean Mode: removes up to 100% plaque.
- Sensitive Mode: sensitively clean your teeth and gums.
- Massage Mode: softly care your gums.

FCC Statement

This device complies with Part 15 of the FCC Rules. Operation is subject to the following two conditions: (1) this device may not cause harmful interference, and (2) this device must accept any interference received, including interference that may cause undesired operation. This device complies with Part 18 of the FCC Rules.

1) This equipment has been tested and found to comply with the limits for an induction charger, pursuant to Part 18 of the FCC Rules. These limits are designed to provide reasonable protection against harmful interference in a residential installation. This equipment generates, uses and can radiate radio frequency energy and, if not installed and used in accordance with the instructions, may cause harmful interference to radio communications. However, there is no guarantee that interference will not occur in a particular installation.

2) Please note that changes or modifications of this product is not expressly approved by the party responsible for compliance could void the user's authority to operate the equipment.

3) If this equipment does cause harmful interference to radio or television reception, which can be determined by turning the equipment off and on, the user is encouraged to try to correct the interference by one or more of the following measures:

- Reorient or relocate the receiving antenna.
- Increase the separation between the equipment and receiver.
- Connect the equipment into an outlet on a circuit different from that to which the receiver is connected.
- Consult the dealer or an experienced radio/TV technician for help.

4) StandardVision LLC

3370 N San Fernando Rd, Ste 206 Los Angeles, CA 90065 USA

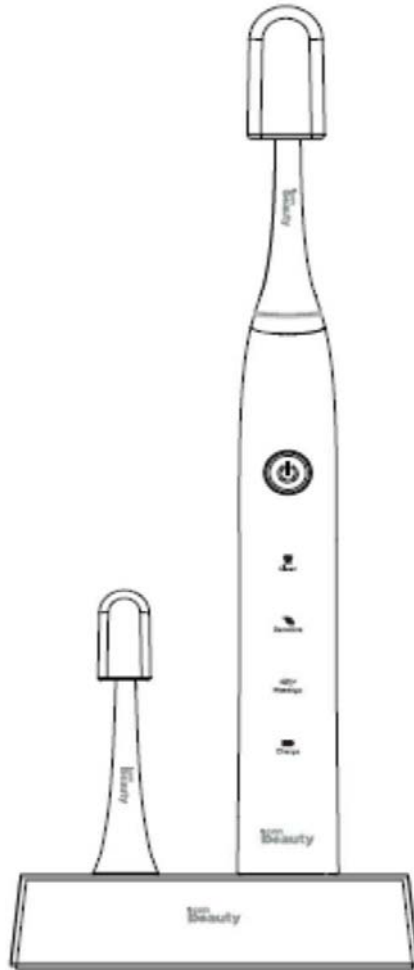
Contact: Brad Gwinn

t 1 (310) 678 9344. bradgwinn@gmail.com

Remark: Not evaluated for FCC Rules.

7.0 Illustrations

Illustration 1h - Instruction Manual for model BH-121



BH-121

Sonic Electric Toothbrush

7.0 Illustrations

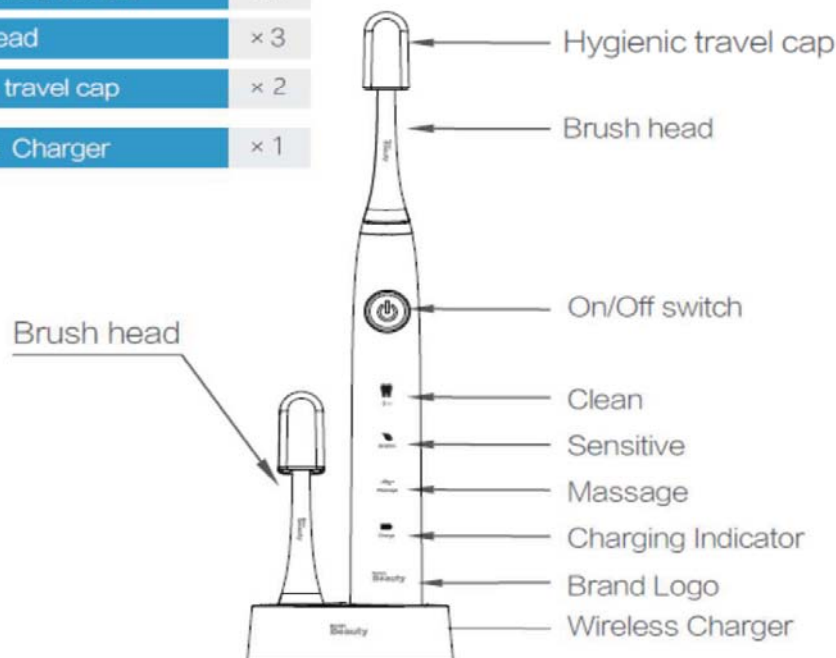
Illustration 1i - Instruction Manual for model BH-121

Product specifications

Product Name	Sonic electric toothbrush
Product Model Number	BH-121
Product Edition	A0
Rated Voltage	100-240V ~ , 50/60Hz
Rated Output Power	1.0W
On/Off Mode	Soft touch
Display	LED
Display Function	Clean/Sensitive/Massage/Charge
Vibrating Frequency	31000 Strokes /min
Charging	Wireless Charger
Charging Time	10-16H
Charging Current	65±15mA
Battery	Li-ion 800mAh/3.7
Battery Indicator	Lower Battery with red light indicator
Waterproof	IPX7

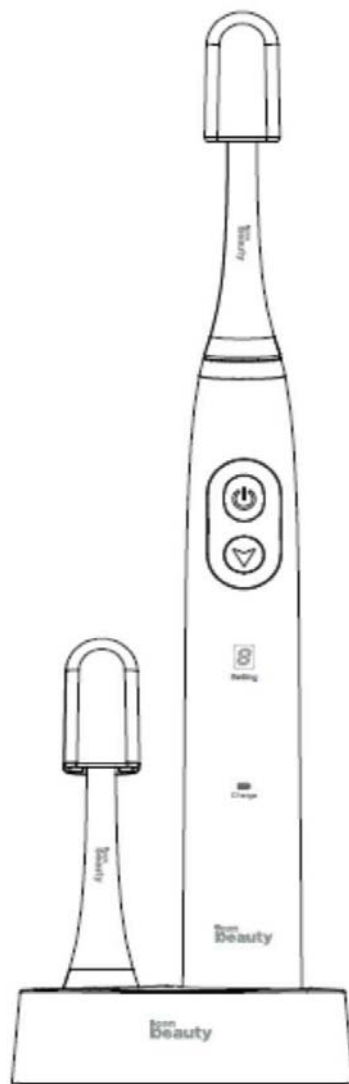
Package Contents

Rechargeable Handle	× 1
Brush Head	× 3
Hygienic travel cap	× 2
Wireless Charger	× 1



7.0 Illustrations

Illustration 1j - Instruction Manual for model BH-126



BH-126

Sonic Electric Toothbrush

7.0 Illustrations

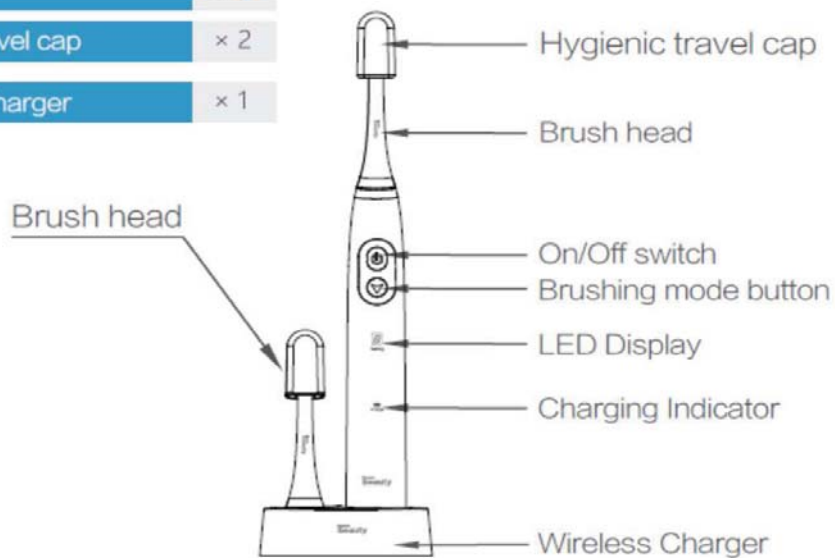
Illustration 1k - Instruction Manual for model BH-126

Product specifications

Product Name	Sonic electric toothbrush
Product Model Number	BH-126
Product Edition	A0
Rated Voltage	100-240V ~ , 50/60Hz
Rated Output Power	1.0W
On/Off Mode	Soft touch
Display	LED
Display Function	Clean/Sensitive/Massage/Charge
Vibrating Frequency	31000 Strokes /min
Charging	Wireless Charger
Charging Time	10-16H
Charging Current	65±15mA
Battery	Li-ion 800mAh/3.7V
Battery Indicator	Lower Battery with red light indicator
Waterproof	IPX7

Package Contents

Rechargeable Handle	× 1
Brush Head	× 3
Hygienic travel cap	× 2
Wireless Charger	× 1



7.0 Illustrations

Illustration 1I - Instruction Manual for model BH-126

Smart Timer

- This product can automatically record and rework your brushing modes and brushing time.
- It is equipped with a 2-min smarter timer to recommend user to brush with a smarter time.

Brushing Mode

This product supports 5 working modes: Tongue Care(1,2) /Whiten(3,4)/Clean(5,6)/Sensitive(7,8)/Massage(9,0).

It will help you to remove more plaque, improve the health of your teeth and gums.

- Tongue Care Mode: tongue ceaning.
- Whiten Mode: teeth cleaning-coffee/smoking.
- Clean Mode: removes up to 100% plaque.
- Sensitive Mode: sensitively clean your teeth and gums.
- Massage Mode: softly care your gums.

This device complies with Part 18 of the FCC Rules.

1) This equipment has been tested and found to comply with the limits for an induction charger, pursuant to Part 18 of the FCC Rules. These limits are designed to provide reasonable protection against harmful interference in a residential installation. This equipment generates, uses and can radiate radio frequency energy and, if not installed and used in accordance with the instructions, may cause harmful interference to radio communications. However, there is no guarantee that interference will not occur in a particular installation.

2) Please note that changes or modifications of this product is not expressly approved by the party responsible for compliance could void the user's authority to operate the equipment.

3) If this equipment does cause harmful interference to radio or television reception, which can be determined by turning the equipment off and on, the user is encouraged to try to correct the interference by one or more of the following measures:

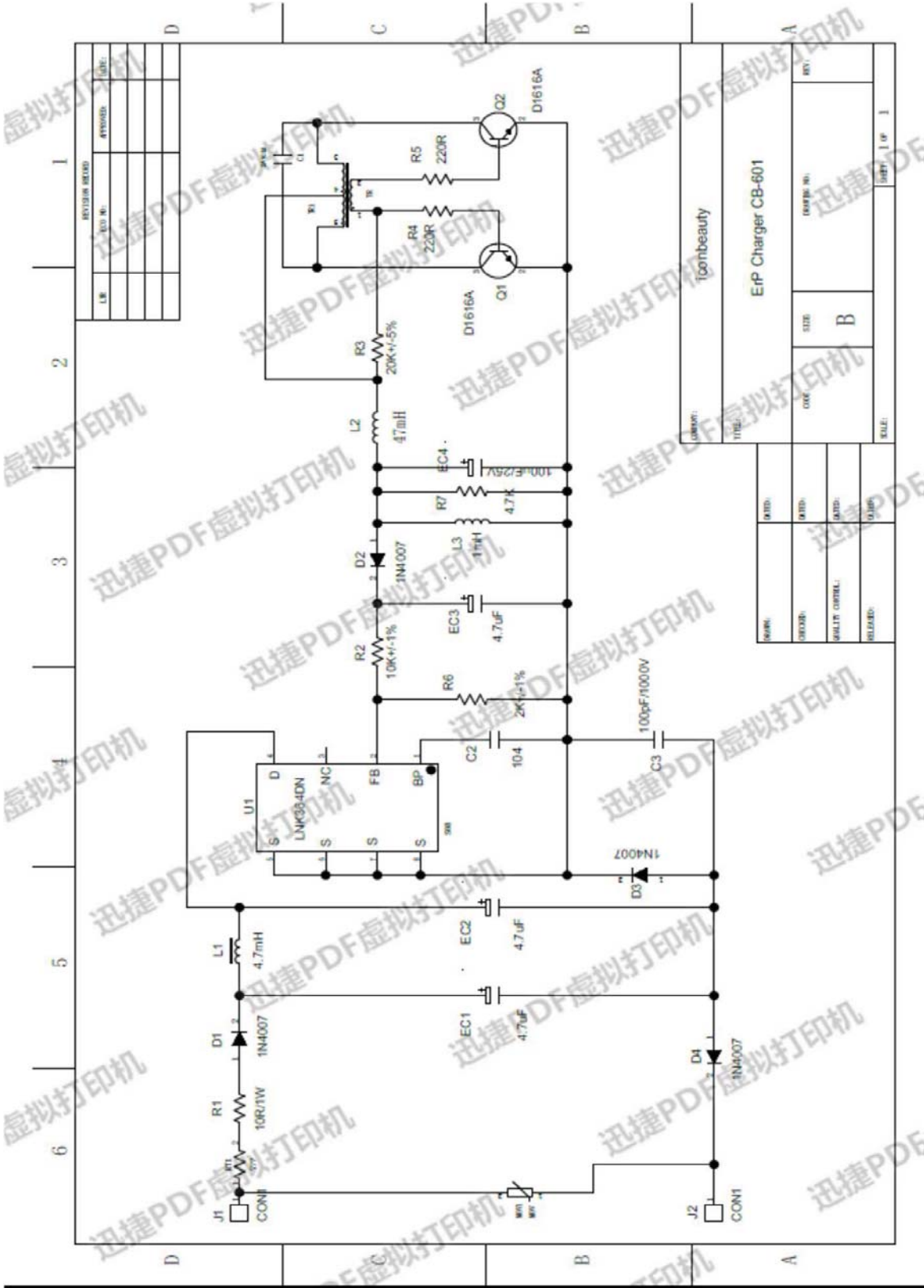
- Reorient or relocate the receiving antenna.
- Increase the separation between the equipment and receiver.
- Connect the equipment into an outlet on a circuit different from that to which the receiver is connected.
- Consult the dealer or an experienced radio/TV technician for help.

4) NuWave, LLC. Importer, 3370 N San Fernando Rd, Ste 206 Los Angeles, CA 90065 USA Address.

Remark: Not evaluated for FCC Rules.

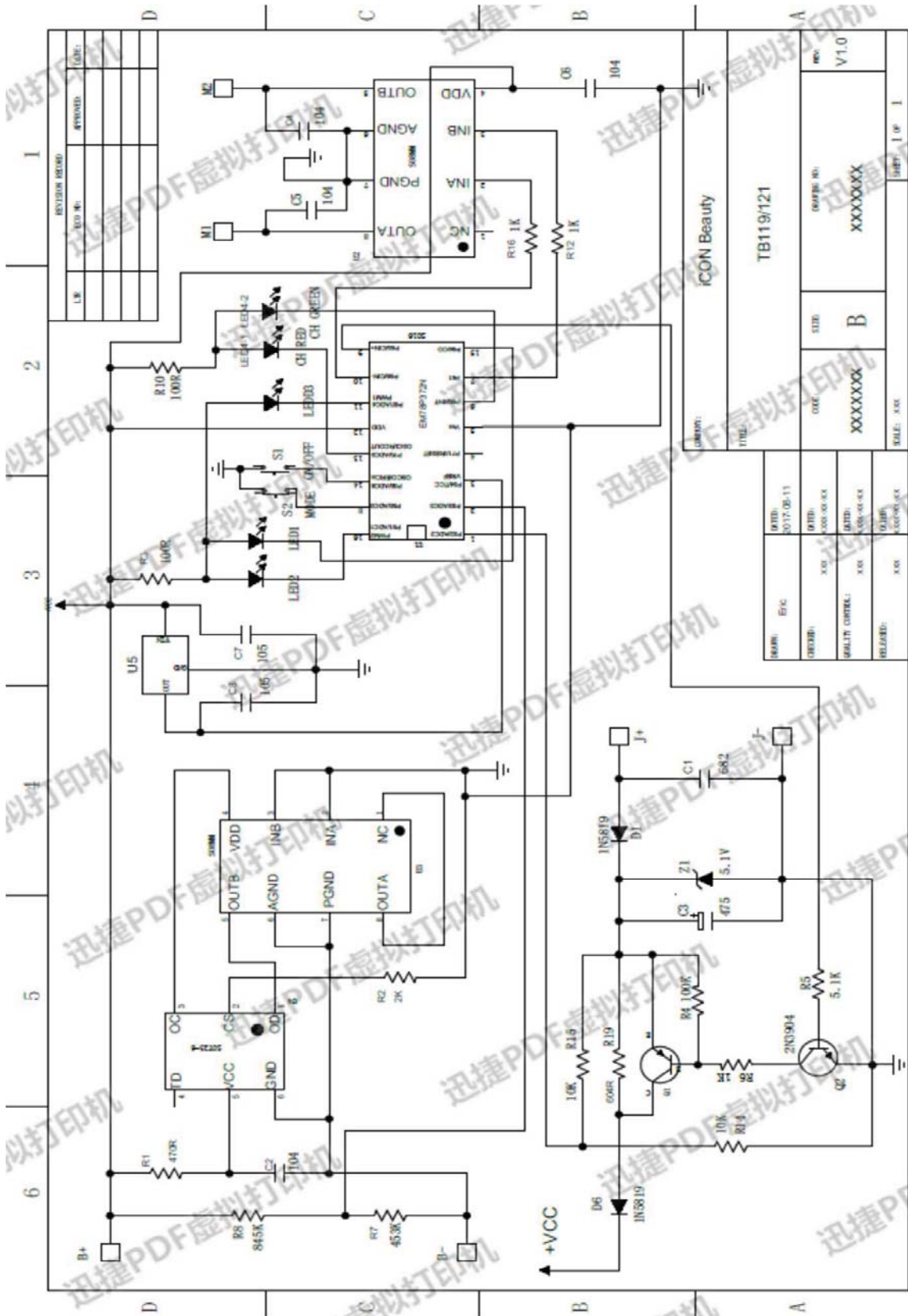
7.0 Illustrations

Illustration 2 - Circuit diagram of Charger PCB for all models



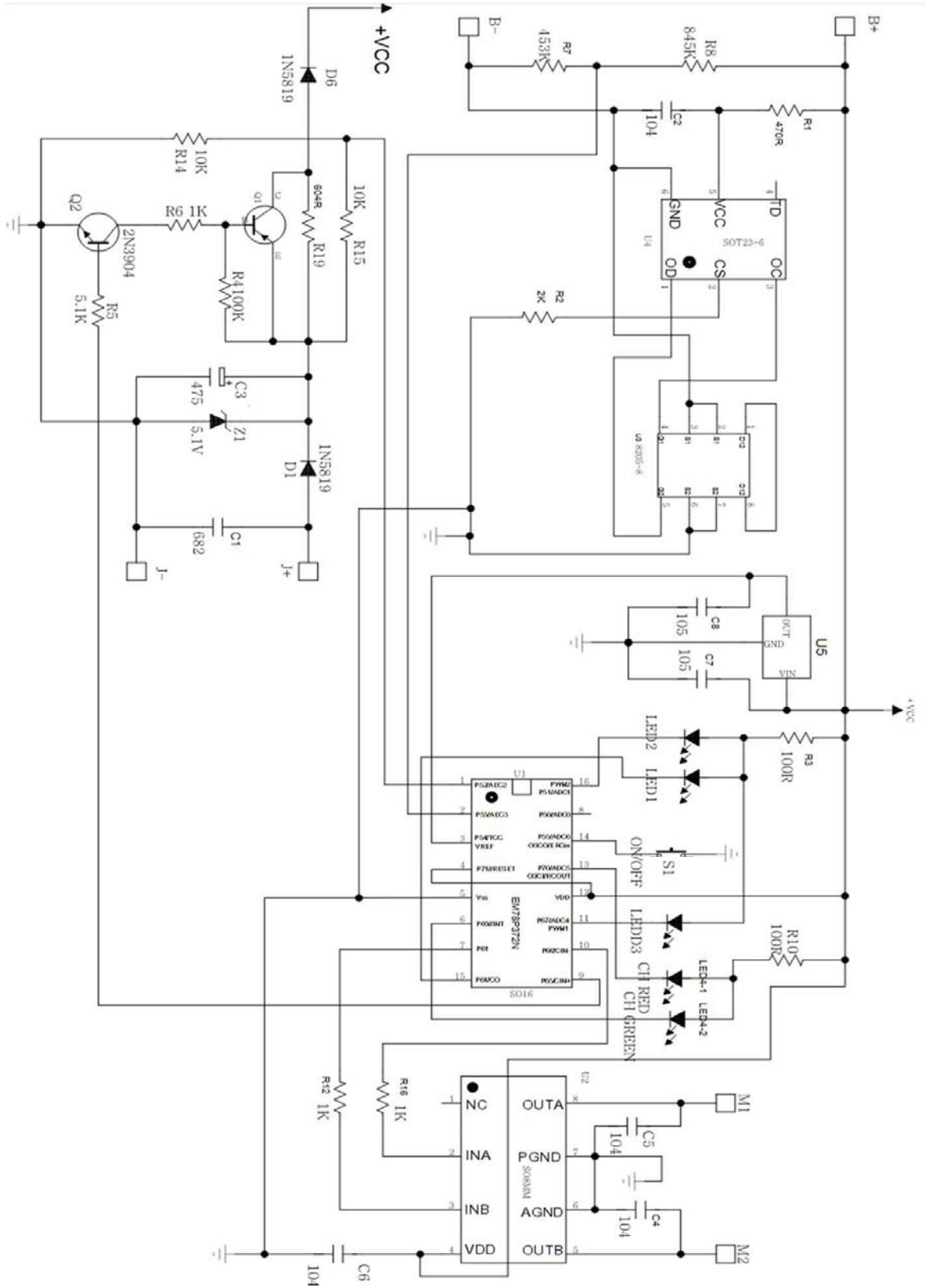
7.0 Illustrations

Illustration 2a - Circuit diagram of Control PCB for model BH-119



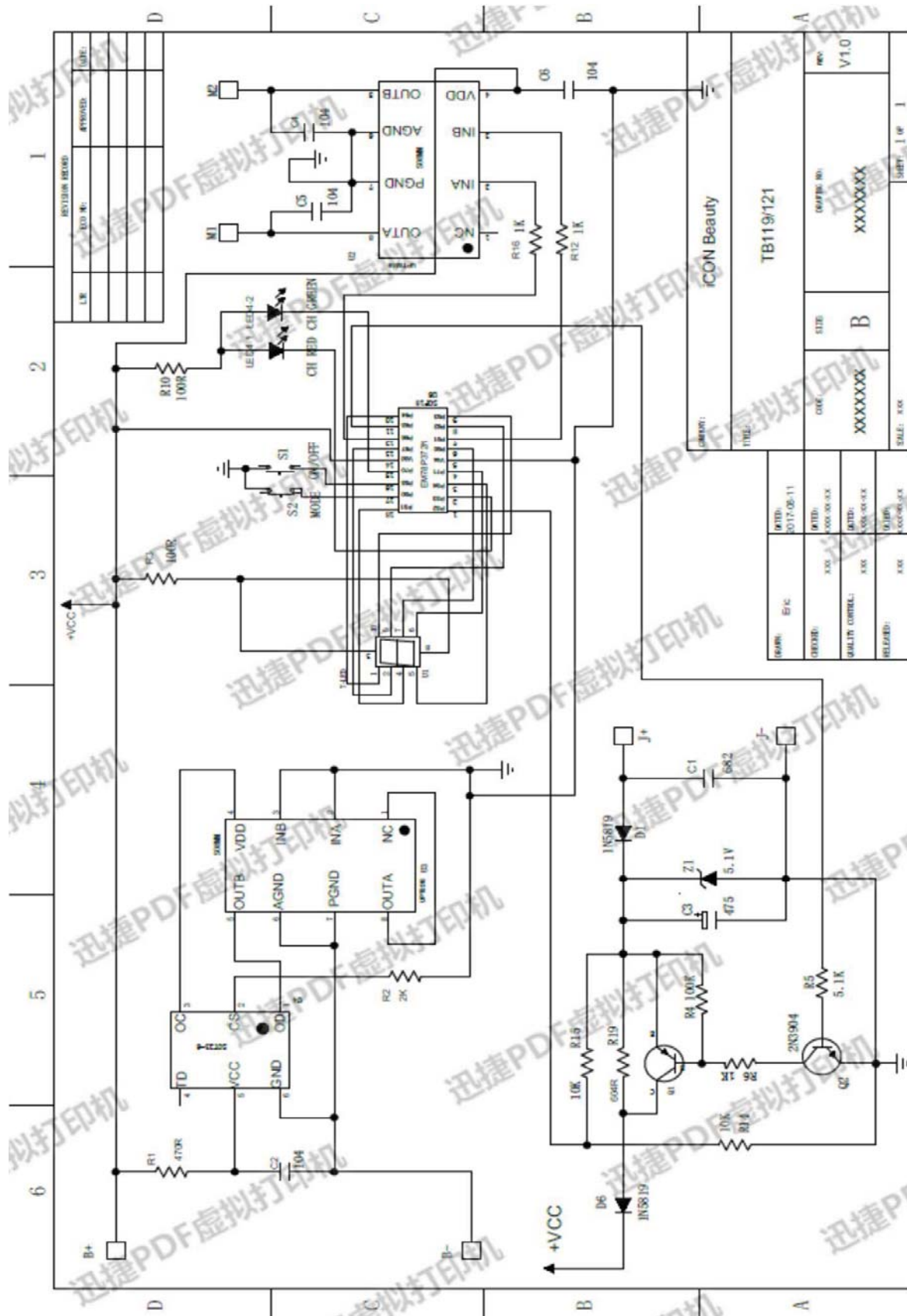
7.0 Illustrations

Illustration 2b - Circuit diagram of Control PCB for model BH-121



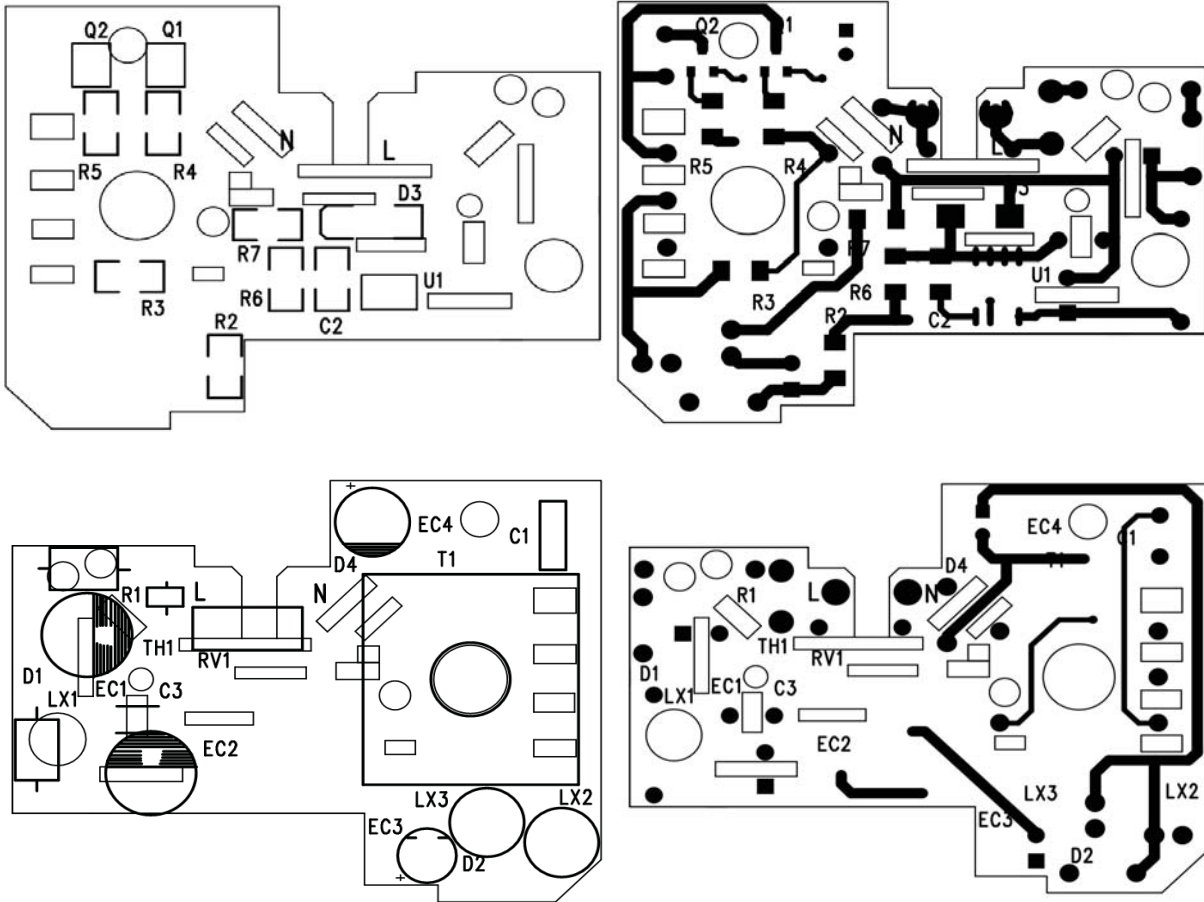
7.0 Illustrations

Illustration 2c - Circuit diagram of Control PCB for model BH-126



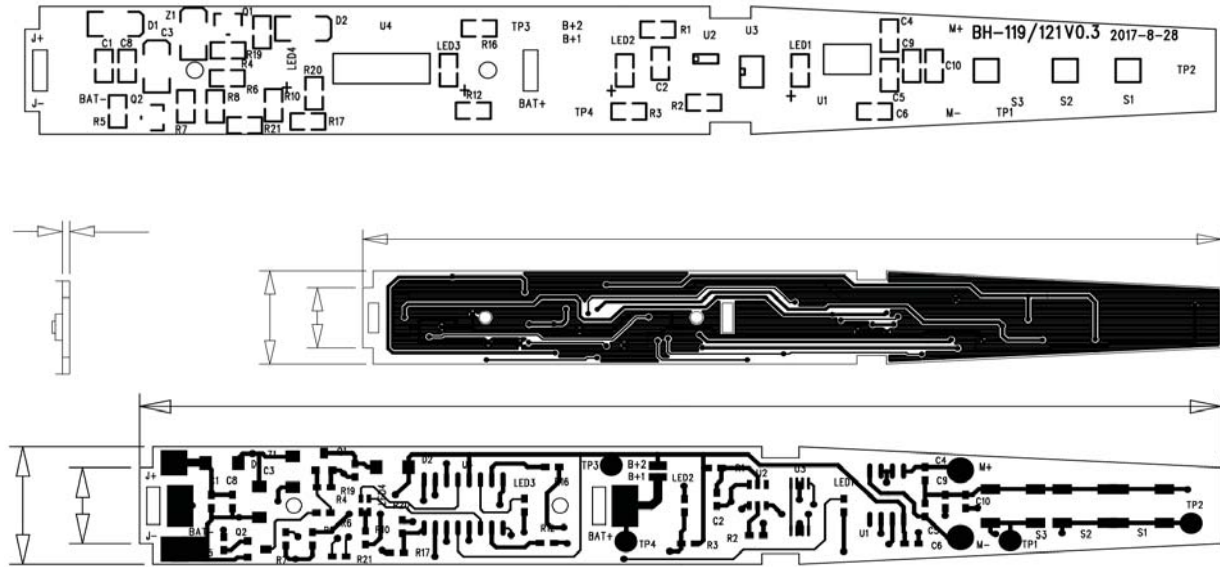
7.0 Illustrations

Illustration 3 - PCB Layout for Charger PCB



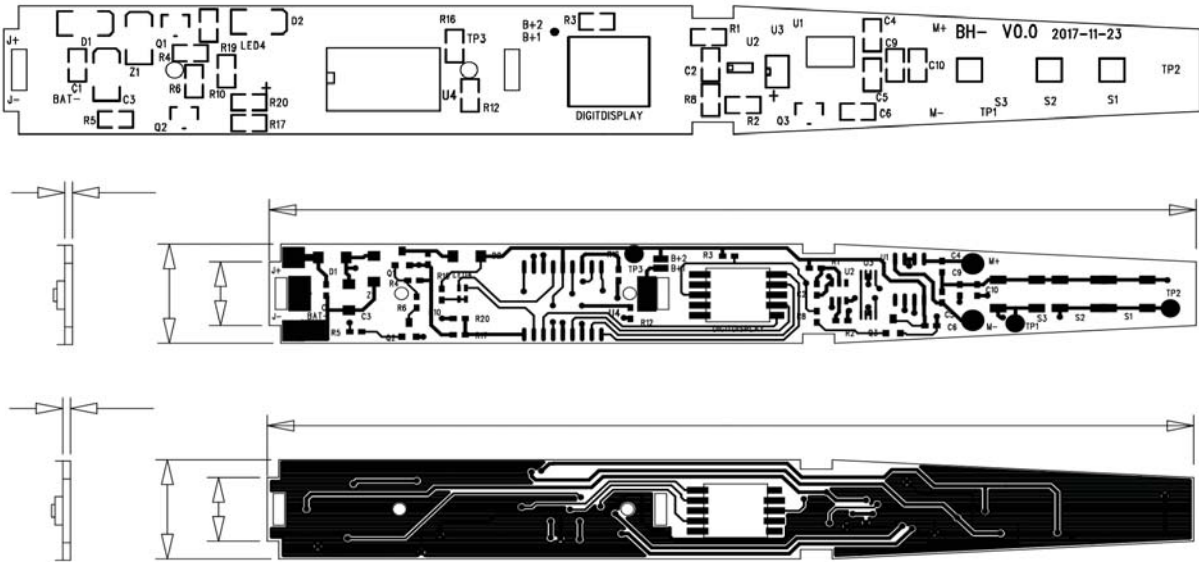
7.0 Illustrations

Illustration 3a - PCB Layout of Control PCB for models BH-119 and BH-121




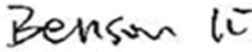
7.0 Illustrations

Illustration 3b - PCB Layout of Control PCB for model BH-126



8.0 Test Summary			
Evaluation Period	2-Feb-2018 to 7-May-2018		Project No. 180202091GZU
Sample Rec. Date	30-Jan-2018	Condition Prototype	Sample ID. S180202091-001~009
Test Location	Intertek Testing Services Shenzhen Ltd. Guangzhou Branch (Address: Block E, No.7-2 Guang Dong Software Science Park, Caipin Road, Guangzhou Science City, GETDD, Guangzhou, China)		
Test Procedure	Testing Lab		
Determination of the result includes consideration of measurement uncertainty from the test equipment and methods. The product was tested as indicated below with results in conformance to the relevant test criteria.			
The following tests were performed:			
Test Description	UL 1431 Issued: 2011/03/23 Ed:3 Rev:2012/10/10 Clause	UL 746C:2004 Ed.6 +R:23Jun2015 Clause	CSA C22.2#60335-1:2016 Ed.2 & CSA C22.2#60335-2-52 Issued: 2014/02/01
Surface Temperatures	37	--	--
Stability	38	--	--
Operational Test	45	--	--
Leakage Current Test	46	--	--
Leakage Current Following Humidity Conditioning Test	47	--	--
Input Test	49	--	--
Temperature Test	50	--	--
Dielectric Voltage-Withstand Test	51	--	--
Abnormal Operation Tests	54	--	--
Cleaning Test	58	--	--
Printed Wiring Assemblies Test	60	--	--
Strain Relief Test	61	--	--
Strain Relief Test After Mold Stress-relief Distortion Test	--	31	--
Resistance to Impact Test	--	56	--
Mold Stress-relief Distortion Test	--	61	--
Marking legible and durability Test	--	--	7.14
Protection Against Access to Live Parts	--	--	8
Power Input / Current Deviation Measurements	--	--	10
Normal Heating Test	--	--	11
Leakage Current Test & Electric Strength Test at operating temperature	--	--	13.2 & 13.3
Protection Degree against Moisture Test	--	--	15.1
Humidity Test	--	--	15.3
Leakage Current Test & Electric Strength Test in humidity	--	--	16.2 & 16.3
Overload Protection of transformer	--	--	17
Abnormal Operation - Locking Test for the Motor	--	--	19.7
Abnormal Operation - Fault Conditions of Electronic Circuit	--	--	19.11
Stability Test	--	--	20.1
Mechanical Hazards- Impact Test	--	--	21.1
Construction_ Plug Discharge Test	--	--	22.5
Construction_ Non-detachable parts Test	--	--	22.11
Construction_ Pull Test for handle and knob etc.	--	--	22.12
Insulation of Internal Wiring Test	--	--	23.5
Power Cord Pull and Torque Test	--	--	25.15

8.0 Test Summary			
Creepage Distance and Clearance	--	--	29
Ball Pressure Test	--	--	30.1
Glow Wire Test	--	--	30.2
Appliance Powered by Rechargeable Batteries	--	--	Annex B
Test Description	UL 1097, Issued: 2012/02/01, Ed:6 / Clause	--	--
Leakage Current Test	13	--	--
Dielectric Voltage-Withstand Tests	14	--	--
Insulation Resistance Test	15	--	--
Resistance to Impact Tests	16	--	--
Abnormal Operation Test	19	--	--

8.1 Signatures			
A representative sample of the product covered by this report has been evaluated and found to comply with the applicable requirements of the standards indicated in Section 1.0.			
Completed by:	Mandy Luo	Reviewed by:	Benson Li
Title:	Engineer	Title:	Senior Tech. Supervisor
Signature:		Signature:	

9.0 Correlation Page For Multiple Listings

The following products, which are identical to those identified in this report except for model number and Listee name, are authorized to bear the ETL label under provisions of the Intertek Multiple Listing Program.

BASIC LISTEE	Iconbeauty (Shenzhen) Holding Ltd
Address	3A, Huamei Mansion, Huamei Road, Baoan District, Shenzhen
Country	China
Product	Electric Toothbrush

MULTIPLE LISTEE 1	None.
Address	
Country	
Brand Name	

MANUFACTURER	
Address	
Country	

MULTIPLE LISTEE1 MODELS	BASIC LISTEE MODELS

MULTIPLE LISTEE 2	None.
Address	
Country	
Brand Name	

MANUFACTURER	
Address	
Country	

MULTIPLE LISTEE2 MODELS	BASIC LISTEE MODELS

MULTIPLE LISTEE 3	None.
Address	
Country	
Brand Name	

MANUFACTURER	
Address	
Country	

MULTIPLE LISTEE3 MODELS	BASIC LISTEE MODELS

10.0 General Information

The Applicant and Manufacturer have agreed to produce, test and label ETL Listed products in accordance with the requirements of this Report. The Manufacturer has also agreed to notify Intertek and to request authorization prior to using alternate parts, components or materials.

COMPONENTS

Components used shall be those itemized in this Intertek report covering the product, including any amendments and/or revisions.

LISTING MARK

The ETL Listing mark applied to the products shall either be separable in form, such as labels purchased from Intertek, or on a product nameplate or other media only as specifically authorized by Intertek. Use of the mark is subject to the control of Intertek.

The mark must include the following four items:

- 1) applicable country identifiers "US" and/or "C" or "US", "C" and "EU"
- 2) the word "Listed" or "Classified" or "Recognized Component" (whichever is appropriate)
- 3) a control number issued by Intertek
- 4) a product descriptor that identifies the standards used for certification. Example:

For US standards, the words, "Conforms to" shall appear with the standard number along with the word, "Standard" or "Std." Example: "Conforms to ANSI/UL Std. XX."

For Canadian standards, the words "Certified to CAN/CSA Standard CXX No. XX." shall be used, or abbreviated, "Cert. to CAN/CSA Std. CXX No. XX."

Can be used together when both standards are used.

Note: A facsimile must be submitted to Intertek, Attn: Follow-up Services for approval prior to use.

The facsimile need not have a control number. A control number will be issued **after signed Certification Agreements** have been received by the Follow-up Services office, approval of the facsimile of your proposed Listing Mark, satisfactory completion of the Listing Report, and scheduling of a factory assessment in your facility.

MANUFACTURING AND PRODUCTION TESTS

Manufacturing and Production Tests shall be performed as required in this Report.

FOLLOW-UP SERVICE

Periodic unannounced audits of the manufacturing facility (and any locations authorized to apply the mark) shall be scheduled by Intertek. An audit report shall be issued after each visit. Special attention will be given to the following:

1. Conformance of the manufactured product to the descriptions in this Report.
2. Conformance of the use of the ETL mark with the requirements of this Report and the Certification Agreement.
3. Manufacturing changes.
4. Performance of specified Manufacturing and Production Tests.

In the event that the Intertek representative identifies non-conformance(s) to any provision of this Report, the Applicant shall take one or more of the following actions:

1. Correct the non-conformance.
2. Remove the ETL Mark from non-conforming product.
3. Contact the issuing product safety evaluation center for instructions.

10.1 Evaluation of Unlisted Components

Because Unlisted Components are uncontrolled, and they do not fall under a third party follow up program, Intertek may require these components to be tested and/or evaluated at least once annually, more often for certain components, as part of the independent certification process. The Unlisted Components in Section 5.0 require testing and/or evaluation as indicated.

Note to Intertek Follow Up Inspector: The Component Evaluation Center, CEC, will notify you in writing when these components must be selected and sent to the CEC for re-evaluation

Ship the samples to:

Intertek Testing Services Shenzhen Limited Guangzhou Branch

ETL Component Evaluation Center

Block E, No. 7-2 Guang Dong Software Science Park, Caipin Road, Guangzhou Science City

CETDD Guangzhou, China.

Attn: Ms. Joey Kuang

Sample Disposition: Due to the destructive nature of the testing, all samples will be discarded at the conclusion of testing unless, the manufacturer specifically requests the return of the samples. The request for return must accompany the initial component shipment.

11.0 Manufacturing and Production Tests

The manufacturer agrees to conduct the following Manufacturing and Production Tests as specified:

Required Tests

Dielectric Voltage Withstand Test
 Polarization Test

11.1 Dielectric Voltage Withstand Test

Method

One hundred percent of production of the products covered by this Report shall be subjected to a routine production line dielectric withstand test.

The test shall be conducted on products, which are fully assembled. Prior to applying the test potential, all switches, contactors, relays, etc., should be closed so that all primary circuits are energized by the test potential. If all primary circuits cannot be tested at one time, then separate applications of the test potential shall be made.

The test voltage specified below shall be applied between primary circuits and accessible dead-metal parts. The test voltage may be gradually increased to the specified value but must be maintained at the specified value for one second or one minute as required.

Test Equipment

The test equipment shall incorporate a transformer with an essentially sinusoidal output, a means to indicate the applied test potential, and an audible and/or visual indicator of dielectric breakdown.

The test equipment shall incorporate a voltmeter in the output circuit to indicate directly the applied test potential if the rated output of the test equipment is less than 500VA.

If the rated output of the test equipment is 500VA or more, the applied test potential may be indicated by either:

- 1 - a voltmeter in the primary circuit;
- 2 - a selector switch marked to indicate the test potential; or
- 3 - a marking in a readily visible location to indicate the test potential for test equipment having a single test potential output.

In cases 2 and 3, the test equipment shall include a lamp or other visual means to indicate that the test potential is present at the test equipment output. All test equipment shall be maintained in current calibration.

Products Requiring Dielectric Voltage Withstand Test:

<u>Product</u>	<u>Test Voltage</u>	<u>Test Time</u>
All products covered by this Report.	1480V	60 s
	or	
	1776V	1 s

11.2 Polarization Test

Method

As a routine production-line verification, each cord-connected appliance provided with a 2-wire polarized plug or 3-wire grounding attachment plug, shall be examined or tested for electrical continuity between the ungrounded circuit supply conductor of the attachment plug (narrow blade) and all components intended to be connected to the ungrounded conductor. If the continuity cannot be readily determined by visual inspection and component checking, an electrical continuity test is to be conducted.

- a) The switch, if employed and
- b) The thermal protect device, if employed.

Any indicating device such as ohmmeter, a battery-and-buzzer combination, or the like, shall be used to determine compliance with the continuity requirements mentioned above.

Products Requiring Polarization Test:

All products covered by this Report.

